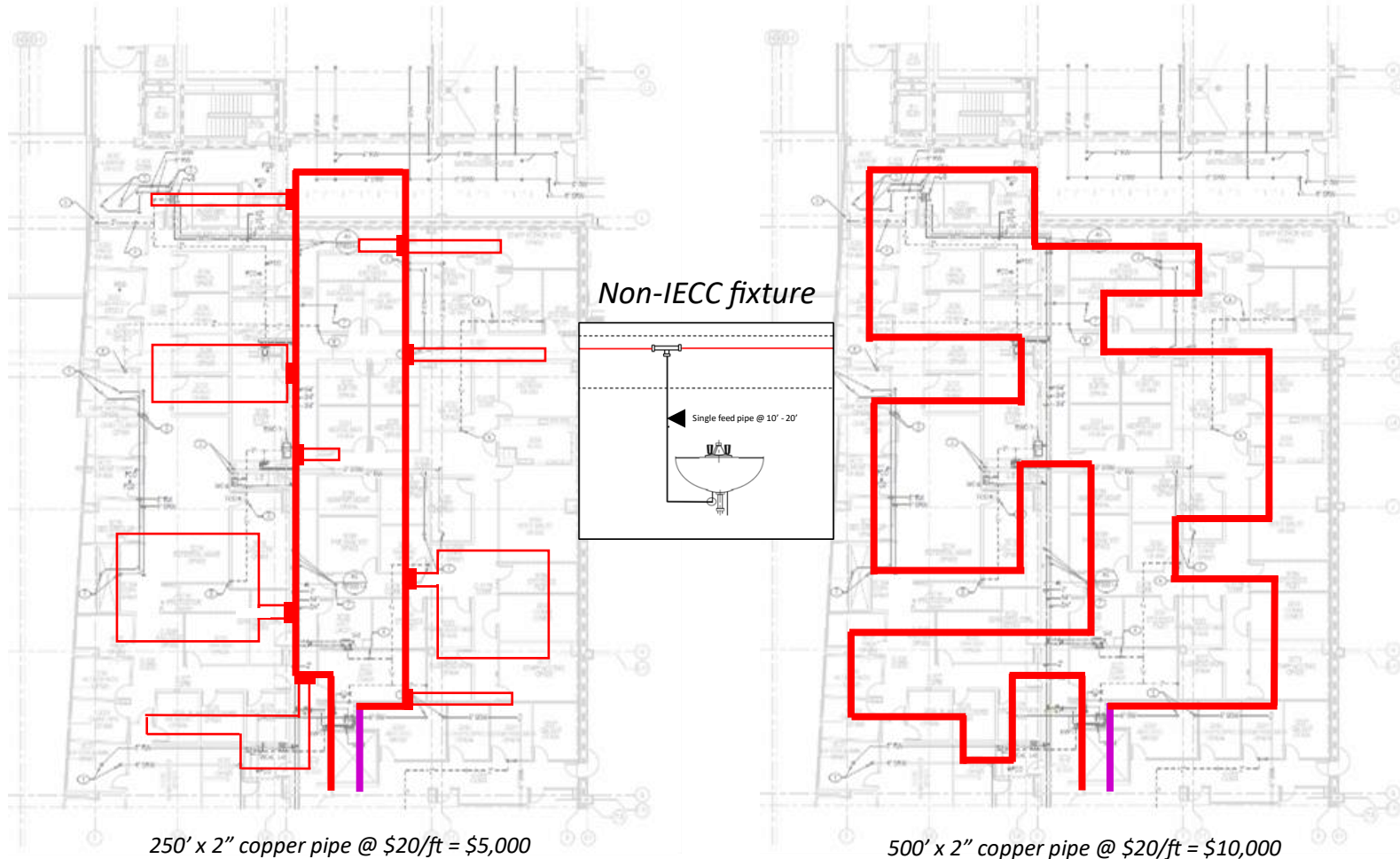


*Pipe savings, pump savings, labor savings, energy savings, water savings, pipe surface area reduction, biofilm minimization...*



*Serpentining large supply pipes overhead is a common practice as a method of positioning the water supply as close to the fixtures as possible to avoid lengthy runouts/dead legs. This method can be costly adding hundreds of feet of pipe length, surface area and volume to the installation.*

*Using Kemper Flow-Splitters can reduce the overall length of large pipe sizes in favor of smaller diameter pipes.*